



Equipment Product Information



Voyager Satellite Station

Description

If you are looking for an all-in-one flexible mobile cleaning solution, look no further. The Voyager range enables foam application disinfection and rinsing of large areas from one unit. The Voyager's built-in pump boosts the water pressure of your existing water supply, just connect the unit up to a water, power and compressed air* supplies to start benefiting from efficient cleaning. There are a number of optional extras for the Voyager range, including an extra rinsing outlet or a separate foam or disinfectant injector with separate outlet, thus allowing two persons to work simultaneously from the same unit.



Key benefits

- Stand-alone mobile cleaning unit
- Can be used for rinsing, application of foam and disinfection
- Option of extra rinsing outlet or separate foam or disinfectant injector with separate outlet

Variants

Voyager is available in three different sizes with or without a built-in compressor.

*Voyager K models incorporate their own compressor for sites without a compressed air supply.



Technical features

| Specifications | | | | | | |
|------------------------------|------------------|------------------|----------------|----------------|----------------|----------------|
| Item No. | 1214226 | 1214227 | 1214228 | 1214230 | 1214232 | 1214234 |
| Description | Voyager 1 | Voyager 1K | Voyager 2 | Voyager 2K | Voyager 4 | Voyager 4K |
| Number of users | 1 | 1 | 1 | 1 | 1 | 1 |
| Pump | CHV 2-80 | CHV 2-80 | CRNE 3-9J | CRNE 3-9J | CRNE 3-9J | CRNE 3-9J |
| Motor, output | 1.1 kW 1.5 HP | 1.1 kW 1.5 HP | 2.2 kW 3 HP | 2.2 kW 3 HP | 4 kW 5.4 HP | 4 kW 5.4 HP |
| Electrical supply | | | | | | |
| Current 1 x 230 V / 50 Hz | 5 amp | 5 amp | – | – | – | – |
| Current 3 x 230 V / 50 Hz | – | – | 8 amp | 8 amp | 13 amp | 13 amp |
| Current 3 x 400 V / 50 Hz | – | – | 5 amp | 5 amp | 9 amp | 9 amp |
| Water | | | | | | |
| Connection, inlet water** | 3/4" | 3/4" | 3/4" | 3/4" | 3/4" | 3/4" |
| Connection, outlet water | 1/2" | 1/2" | 1/2" | 1/2" | 1/2" | 1/2" |
| Maximum water temperature | 70°C | 70°C | 70°C | 70°C | 70°C | 70°C |
| Minimum water inlet flow | 3 m³/h | 3 m³/h | 4.5 m³/h | 4.5 m³/h | 4.5 m³/h | 4.5 m³/h |
| Minimum inlet water pressure | 1.5 bar | 1.5 bar | 1.5 bar | 1.5 bar | 1.5 bar | 1.5 bar |
| Maximum inlet water pressure | 10 bar | 10 bar | 10 bar | 10 bar | 10 bar | 10 bar |
| Water pressure at 30 l/min* | 10 bar | 10 bar | – | – | – | – |
| Pump pressure at 40 l/min* | – | – | 20 bar | 20 bar | 25 bar | 25 bar |
| Air | | | | | | |
| Compressor | – | Oilless | – | Oilless | – | Oilless |
| Minimum air pressure | 5 bar | 5 bar | 5 bar | 5 bar | 5 bar | 5 bar |
| Maximum air pressure | 10 bar | 10 bar | 10 bar | 10 bar | 10 bar | 10 bar |
| Minimum air supply flow | 150 l/min | 150 l/min | 150 l/min | 150 l/min | 150 l/min | 150 l/min |
| Outlet hose | | | | | | |
| Maximum outlet hose length | 20 m | 20 m | 35 m | 35 m | 35 m | 35 m |
| Dimensions | | | | | | |
| Height | 970 mm | 970 mm | 970 mm | 970 mm | 970 mm | 970 mm |
| Length | 1350 mm | 1350 mm | 1350 mm | 1350 mm | 1350 mm | 1350 mm |
| Width | 570 mm | 570 mm | 570 mm | 570 mm | 570 mm | 570 mm |
| Weight | 70 kg | 90 kg | 100 kg | 120 kg | 120 kg | 140 kg |

* At a 4 bar inlet pressure

** Option with extra outlet: 1" (Voyager 4/4K)



System configuration

| Choose basis | | | | | |
|--------------|-------------|-------------------|-----------------------|------------|--------------------------------|
| Item No. | Description | Voltage | Maximum pressure bar* | Flow l/min | Number of users rinse 40 l/min |
| 1214226 | Voyager 1 | 1 x 230 V / 50 Hz | 10 | 7-30 | 1 (30 l/m) |
| 1214227 | Voyager 1K | 1 x 230 V / 50 Hz | 10 | 7-30 | 1 (30 l/m) |
| 1214228 | Voyager 2 | 3 x 400 V / 50 Hz | 20 | 7-60 | 1 |
| 1214230 | Voyager 2K | 3 x 400 V / 50 Hz | 20 | 7-60 | 1 |
| 1214232 | Voyager 4 | 3 x 400 V / 50 Hz | 25 | 7-67 | 1 |
| 1214234 | Voyager 4K | 3 x 400 V / 50 Hz | 25 | 7-67 | 1 |

*At a 4 bar inlet pressure.

Notes

K: With built-in compressor.

For information on further variants, please refer to your usual contact person.

System options

Choose options

Separate D-injector



For disinfectant – in order to supply the unit with two outlets instead of one. The extra outlet is controlled by a ball valve and is designed for disinfectant only.
1214236 Model: 1
1214237 Model: 2, 4

F-mix two chemicals



This injector will create suction in two different suction hoses at the same time. Be aware of chemical mixture.
1214240 Model: 2, 4

Guard rail



Protects the Voyager housing/ wheels during operation in narrow places.
1214242 All models

Manual hose reel



For carrying hoses up to 15 metres.
1214248 All models

Separate F-injector



For foam – in order to supply the unit with two outlets instead of one. The extra outlet is controlled by a ball valve and is designed for foam only.
1214238 Model: 1
1214239 Model: 2, 4

Extra outlet for rinse



Allows two persons to rinse at the same time, or one person to foam/disinfect and another person to rinse. The extra outlet will only rinse.
1214241 Model: 4

Bracket for manual hose reel



For mounting of hose reel on handle.
1214247 All models



Purchasing guide

Standard tools delivered with a Voyager Satellite Station

Adjusting dosing
valve key

1215840
All models



Recommended tools for a Voyager Satellite Station

Male coupling, 1/2" BSP female

1214376
All models



Low pressure valve
(with bend)

1214722
All models



20 m Light blue hose <70°C
1/2" M-M BSP

1214614
Model: 1



25 m SS light blue hose <70°C
1/2" M-M BSP

1214604
Model: 2, 4



10 m Complete inlet hose
3/4" BSP-Nito

1214653
All models



10 m Complete inlet hose
1" BSP-Nito

1214660 Model 4
(if 1214241 selected)



Rinse pipe 660 mm
BR15/30

1214454
Model: 1



Rinse pipe 660 mm
BR25/40

1214473
Model: 2, 4



Rinse system nozzle
BR15/30

1214506
Model: 1



Rinse system nozzle
BR25/40

1214513
Model: 2, 4



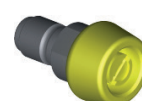
Foam system nozzle
BR50/200

1214568
All models



Disinfection system nozzle
KS60/30

1214526
All models



1" Water tap outlet
with Nito quick
coupling

1214778 Model 4
(if 1214241 selected)



3/4" Water tap outlet
with Nito quick
coupling

1214779



10 m Complete
inlet hose 1/4"
for air

1214670
All models



1/4" Air tap outlet with quick
coupling

1214781
All models



Recommended spare parts for maintaining a Voyager Satellite Station – Available on request

Non-return valve DN 20

1215407



Shaft seal cartridge

1215593



Dosing valve
yellow/light grey*

1215373



Dosing valve grey/light grey

1215374



Non-return valve air M-F 1/4"

1215385



Ball valve 1/2" SS

1215195



Filter insert for oil-free

1215610



O-ring ø24 x 2 70 shore

1215078



Set of O-rings f. coupling

1215091



Viton O-rings

All O-rings in chemical contact in
VITON material.

For Voyager: 1214243

For separate D-injector: 1214244

For separate F-injector: 1214245

For F-mix: 1214246

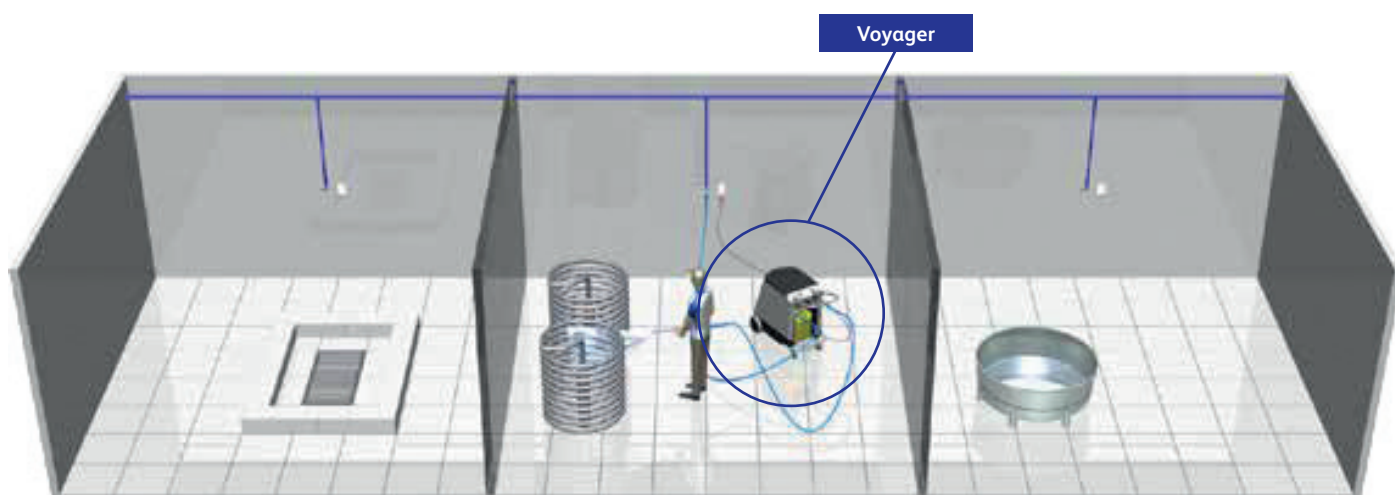


Cleaning solution

Mobile cleaning

Voyager is a mobile cleaning solution offering the user a high degree of flexibility.

It enables both rinsing, foam application and disinfection covering a large area.



Voyager is provided with a built-in pump which boosts the water pressure of an existing water supply.

Water outlets are located at key locations at which cleaning takes place, since Voyager must be connected to a water supply, main power and compressed air (except K models which feature their own compressor).

Options include an extra rinsing outlet or a separate foam or disinfectant injector with separate outlet, thus allowing two persons to work simultaneously at the same unit.